

## Unprecedented Accuracy and Reliability



### Load cell replacement

Has never been easier. As easy as raising a bolt.



### Simple and fast

The bearing design makes the belt adjustment simple and fast.



### Modular design

Makes conveyor belt changes a breeze.



### Large base

The large, open base allows easy clean-up.



9477 Mild Steel



9477 Stainless Steel

### Superior in-motion performance

The METTLER TOLEDO 9477 scale conveyor is an in-motion scale for weighing large packages such as boxes, cartons, cases, bags, or sacks. Its proven design delivers accurate and repeatable weights while a wide variety of accessories allow it to be tailored to specific application needs. The robust frame and conveyor construction withstands the impact of heavy packages, so the system is ideal for tough environments. Optional stainless steel construction is also available. Convenient access to all major components for easy inspection, cleaning, and maintenance is provided while the METTLER TOLEDO belt design makes tracking, tensioning, and change out fast and simple.

**METTLER TOLEDO**

Technical data

# 9477

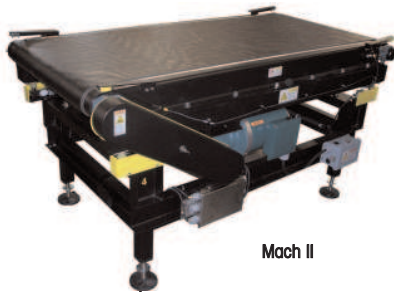
## Heavy duty weighing solution

### Standard features

- Powder-coated mild steel construction
- Seamless Habasit black conveyor belt
- IP54 ingress protection
- Unique design makes belt replacement simple and easy

### Options and accessories

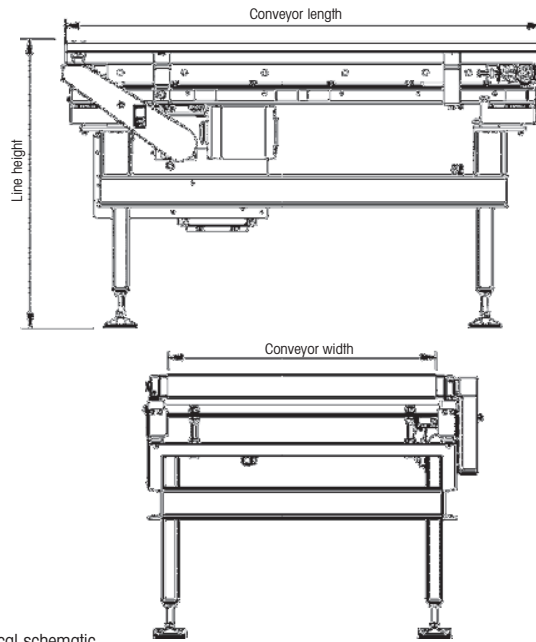
- METTLER TOLEDO FreeWeigh.Net SQC system
- Remote display
- Stainless steel washdown construction
- IP65 ingress protection
- Infeed and outfeed conveyors to match speeds
- Heavy duty push off rejecter (requires compress air supply, 60 to 115 psi)
- Special power requirements available upon request



Mach II

Mach II	Technical data
Construction	Powder-coated mild steel frame with powder coated aluminum conveyor bed, precision balanced pulleys with seamless woven belt
Line speed	250 – 600 fpm, with variable speed drive included
Nominal weighing capacity	200 lb
Rate capacity	85 to 160 cartons per minute
Photoeyes	Send/receive type, IP67
Operating environment	14°F to 104°F (-10°C to 40°C) 10% to 95% humidity, non condensing
Power requirements	230/3φ, 460/3φ
Motor and drive	1 HP IP55 56C motor with right angle reducer. Taper-lock timing belt drive.
Load cells	Four 5000 division, 250 lb load cells
Hazardous environment	Not available
Conveyor belt widths <sup>1</sup>	24"      30"      36"
Conveyor belt lengths <sup>1</sup>	48, 60"      48, 60, 66"      60, 72"
Line height <sup>1</sup>	24 – 44" ±2"

<sup>1</sup> Conveyor widths, lengths, and heights listed are standard. Other widths, lengths and heights are available as special constructions. Consult factory.



9477 typical schematic

9477	Technical data			
Construction	Powder-coated mild steel or stainless steel for washdown			
Line speed and rate*	30 – 240 fpm			
Conveyor belt materials	Seamless Habasit black for mild steel, USDA white for washdown			
Fixed speeds	30, 35, 40, 45, 50, 60, 70, 80, 90, 100, 120, 140, 150, 160, 180, 200, 220, 240 fpm			
Variable speeds	30 to 100, 80 to 160, 120 to 200, 150 to 240 (feet per minute)			
Photoeyes	Send/receive type, IP67			
Operating environment <sup>1</sup>	14°F to 104°F (-10°C to 40°C) 10% to 95% humidity, non condensing <sup>1</sup>			
Power requirements <sup>2</sup>	230/3φ, 460/3φ	230/3φ, 460/3φ, 575/3φ <sup>2</sup>		
Motor and drive <sup>3</sup>	0.4 HP IP65 motor with in-line reducer. Taper-lock timing belt drive.	1/2 HP IP55 <sup>3</sup> 56C motor with right angle reducer. Taper-lock timing belt drive.		
Load cells	Four 5000 division, 50 kg load cells	Four 5000 division, 250 lb load cells		
Hazardous environment	Not available	Class I or II, Division I or II, Groups C, D, E, F, and G		
Rate capability	Up to 100 ppm	Up to 80 ppm	Up to 60 ppm	Up to 50 ppm
Conveyor belt widths	12"	18"	24"	30"
Conveyor belt lengths <sup>4</sup>	21, 24, 30"	24, 30, 36"	36, 48, 60"	48, 60, 72"
Line height <sup>5</sup>	18 - 36" ±2"	18 - 40" ±2"	24 - 44" ±2"	24 - 44" ±2"
Nominal weighing capacities	20 kg	40 kg	100 kg	100 kg
Accuracy**	From ±10g	From ±15 g	From ±30 g	From ±45 g
Pulley diameter	2.5"	2.5"	4"	4"

\* Depends on the design and dimensions of the weighing belt used.

\*\* Depends on the weight, dimensions, and transport of the product to be weighed.

<sup>1</sup> Describes environment for a mild steel construction. stainless steel construction is rated IP65, and suitable for cleanup with low pressure and mild detergent.

<sup>2</sup> 575V option is special order.

<sup>3</sup> Motor for stainless steel construction is IP56.

<sup>4</sup> Conveyor length sizes are also available as non-weighing infeed and outfeed conveyors.

<sup>5</sup> Heights given are the standard range. For special lower or higher machine, consult factory.



**Mettler-Toledo, Inc.**

1900 Polaris Parkway, Columbus, Ohio 43240

Tel: 614-438-4511

Fax: 614-438-4900

e-mail: sales@mt.com



Subject to technical changes

©2007 Mettler-Toledo, Inc.

Printed in U.S.A.

[www.mt.com/industrial](http://www.mt.com/industrial)

For more information